



RECHARGEABLE BATTERY PACK KIT USE GUIDE

FOR USE WITH
**GAME READY
GRPRO® 2.1 CONTROL UNIT**

ENGLISH

INTENDED PRODUCT USE:

- For use with the GRPro 2.1 Control Unit (PN 550550-XX) when AC power is unavailable or inconvenient.

FEATURES:

- Will provide power to Game Ready Control Unit for approximately seven hours of treatment time.
- 12 VDC regulated output provides consistent voltage throughout the entire charge.
- Fully charges in just a few hours.
- Easy to read power level with push-button fuel gauge.
- Rubber port connector covers provide protection against water damage (IP22 Rated)
- Power Save mode for increased battery life

CONTENTS OF KIT:

Use caution when unpacking the contents of the kit from its packaging. Do not drop the battery, and do not expose it to liquids.

GAME READY RECHARGEABLE BATTERY PACK



CONNECTOR CABLE



POWER CORD AND AC ADAPTER



CARRY CASE

REMOVE AND READ THIS MANUAL PRIOR TO USE



WARNINGS

It is mandatory to fully read and understand the GRPro 2.1 User Manual before using the device. Failure to follow operating instructions could result in serious injury.

- Do not expose the Rechargeable Battery Pack to fire or dispose of in fire.
- Keep out of the reach of children and animals.
- Never use a Rechargeable Battery Pack that appears damaged.



CAUTION

To avoid damage to the Game Ready Rechargeable Battery Pack (battery) and Control Unit:

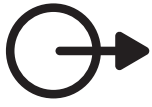
- Do not expose the battery or AC adapter to water.
- The battery and AC adapter should be protected from dust, dirt, and other foreign materials.
- The battery should only be used with the Game Ready Control Unit.
- Use only the Game Ready AC adapter provided with the Rechargeable Battery Pack Kit. Do not use the AC adapter provided with the Control Unit to charge the battery.
- Do not use the AC adapter provided with the Rechargeable Battery Pack Kit to power the Game Ready Control Unit.
- Avoid excessive physical shock or vibration.
- Do not disassemble or deform the battery.
- Do not drop the battery.

ICONS ON THE BATTERY



AC Power Input Port

Use this port to charge the battery with the provided AC adapter



DC Power Output Port

Use this port to provide power to the Control Unit with the provided connector cable



Battery Level Indicator LED Lights

Four LED lights indicate the remaining capacity



Power On/Off Button

Press once to turn the battery on. Press again to turn the battery off.

Pressing the On/Off Button will also show the battery level. See *Checking the Power Level*.

CHARGING THE BATTERY

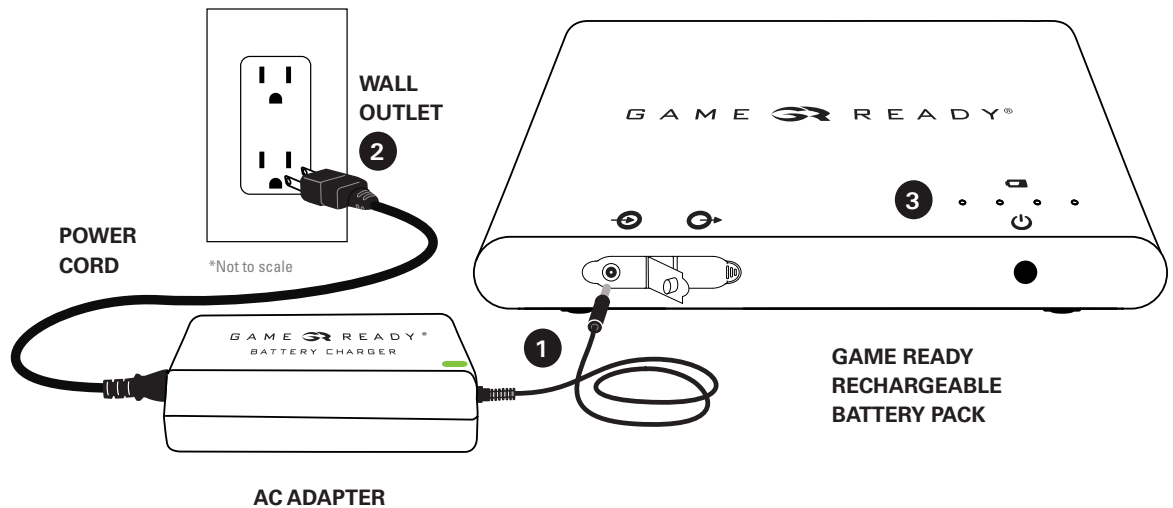
The battery will display sequential blue lights from right to left during the charge cycle. Once all four lights are solid blue, the battery is completely charged and ready to use.

1 Insert the barrel plug end of the AC adapter into the AC Power Input Port located on the battery.

2 Insert the wall plug into an AC wall outlet. The AC adapter will display a green light while receiving power from the wall outlet.

3 The battery is fully charged when all four LED lights are solid blue on the battery.

4 Disconnect the barrel plug from the battery. The battery is now ready for use. Unplug the AC adapter from the battery and the wall outlet, and store it in a safe place.



NOTE: The battery will not provide power to the Control Unit while charging.

CHECKING THE POWER LEVEL

1 With all cables unplugged from the battery, press the Power On/Off button to momentarily display the LED lights.

2 Verify remaining power level by viewing the LED Light Indication chart.

The power level will also be continuously displayed while the battery is in use.

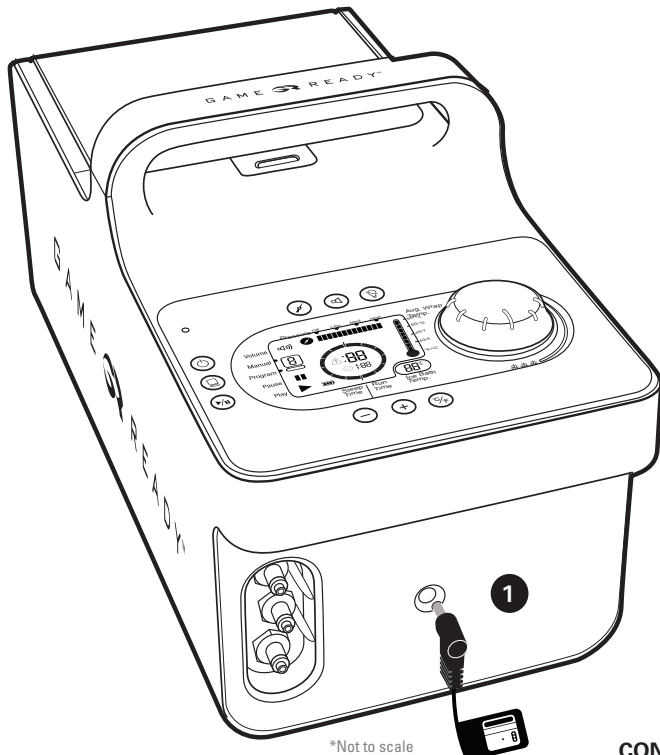
NOTE: If the LED lights do not illuminate when the On/Off button is pressed, charge the battery. See *Charging the Battery*.

LED LIGHT INDICATION	
● ● ● ●	4 blue LED lights = Fully Charged
○ ● ● ●	3 blue LED lights
○ ○ ● ●	2 blue LED lights
○ ○ ○ ●	1 blue LED light
○ ○ ○ ○	0 LED lights = No power remaining

USING THE BATTERY

To turn the battery on, the Connector Cable must be plugged into the DC Power Output Port on the battery. Press the Power On/Off button and the LED lights will turn on indicating the remaining capacity.

NOTE: If the Connector Cable is not plugged in to the battery, the LED lights will turn off and the battery will enter Power Save mode. If the LED lights are illuminated, the battery is on and ready to use.



GAME READY GRPRO 2.1
CONTROL UNIT

*Not to scale

CONNECTOR CABLE

To turn the battery off (Power Save Mode), unplug the Connector Cable from the battery and/or press the Power On/Off button. The LED lights will turn off and the battery will enter Power Save mode.

- 1 Gently insert the proper barrel plug on the Connector Cable (marked on cable) into the Control Unit (as shown).
- 2 Insert the other barrel plug into the DC Power Output Port on the Battery Pack. The Control Unit is now ready for approximately seven hours of treatment time.
- 3 If the LED lights are off, then turn the battery on by pressing the Power On/Off button.
- 4 Unplug the connector cable from the Battery Pack, or turn off the battery by pressing the Power On/Off button immediately after each use to prevent battery drain and to preserve the battery integrity.

NOTE: The Game Ready Rechargeable Battery Pack has its own on-board fuel gauge, therefore, the battery indicator on the Control Unit will not function when using the Battery Pack.



GAME READY
RECHARGEABLE
BATTERY PACK

CLEANING THE BATTERY

It is important to keep the battery clean and as dust-free as possible. To ensure that your battery remains in the best condition possible, we recommend that you clean the exterior surface of the battery with a soft, damp cloth and one of the following:

- Mild detergent
- CaviCide™ or CaviWipes™
- Mikroqid® Sensitive Wipes

STORAGE INSTRUCTIONS

- Store in a cool, dry, and well-ventilated area.
- Optimum storage is achieved at room temperature. Elevated temperatures will reduce battery life.
- The battery is shipped with 30–50% remaining capacity to give some residual power prior to fully charging.
- It is recommended to fully charge the battery prior to first time use.
- If long storage is required, it is recommended that the battery is periodically recharged to preserve the electronic integrity of the battery. Fully charge before use and every six (6) months.

DISPOSAL

Regulations for disposal of batteries vary by region. Please dispose of in accordance with local regulations.

FREQUENTLY ASKED QUESTIONS

How long does a battery charge last?	The Game Ready Rechargeable Battery Pack will power the GRPro 2.1 for approximately seven (7) hours of therapy time.
How long does it take to fully charge the battery?	The Game Ready Rechargeable Battery Pack will be fully charged in approximately four (4) hours.
There are no lights showing when I press the On/Off button. What should I do?	Charge the battery. See <i>Charging the Battery</i> .
Can I use the AC Adapter from my GRPro 2.1 to charge the battery?	No. Only use the AC Adapter that came with your battery pack.
Will the AC Adapter that came with my battery power my GRPro 2.1?	No. Only use the AC Adapter that came with your GRPro 2.1 to power the Control Unit.
Is the Connector Cable bi-directional?	No. Each end is designed to fit into either the Control Unit or the DC Power Output Port on the battery. Icons are provided on the cable indicating where each end should be plugged into.
How can I maximize the life of my battery?	It is recommended that you charge your battery at least every six months to maintain the electronic integrity of the battery. Keep in mind, the Rechargeable Battery Pack capacity will diminish over time with age and use.
My battery no longer holds a charge. How should I dispose of it?	This product must not be disposed of with household/consumer waste. To learn where to drop off your electrical and electronic waste, please contact your local city/municipal waste disposal service office or contact Game Ready for assistance.

RECHARGEABLE BATTERY PACK SPECIFICATIONS

Capacity	97Wh
Input Voltage	12.6VDC
Output Voltage	12VDC \pm 1VDC
Input Current (Max)	3.0A
Output Current (Max)	5.0A
Protection	over-charge/over-discharge excess current/short circuit
Fuel Gauge	4 LED indicator lights
Size/Weight	180 x 110 x 23 mm/640g
Charge Temperature	0 °C to 45 °C
Storage Temperature	-20 °C to +60 °C (20 °C recommended)
Discharge Temperature	-20 °C to +60 °C
Humidity	5-85% Non-condensing
Expected Service Life	2 years

AC ADAPTER SPECIFICATIONS

Input Voltage	50/60Hz, 100-240VAC
Output Voltage	12.6VDC, 2.5 Amps

WARRANTY INFORMATION

The Game Ready Rechargeable Battery Pack Kit is warrantied to be free from defects in material and workmanship for three months from date of purchase. Proof of purchase required.

EXTENT OF LIMITED WARRANTY

This limited warranty does not cover damages due to external causes, including, without limitation, accident, usage not in accordance with product instructions, misuse, neglect, alteration, or repair.

NOTE: The Rechargeable Battery Pack capacity will diminish over time with age and use.



EMERGO EUROPE
Prinsessegracht 20
2514 AP The Hague
The Netherlands

EMERGO AUSTRALIA
201 Sussex Street
Darling Park, Tower II, Level 20
Sydney NSW 2000
Australia

COOLSYSTEMS®, INC.
DBA Game Ready®
1800 Sutter Street, Suite 500
Concord, CA 94520 USA
1.888.GAMEREADY +1.510.868.2100
www.gameready.com

©2017 CoolSystems, Inc. All Rights Reserved
Game Ready Rechargeable Battery Pack Use Guide



704867 Rev A